

# Stereotactic Needle Biopsy Phantom

## A Compressible, Re-Usable Leak-Free Breast Biopsy Phantom

- Anthropomorphic shape allows accurate simulation of breast compression
- Simulates needle resistance during biopsy
- Features 11 dense masses in three sizes, with two microcalcification clusters
- Compatible with standalone, add-on and digital stereotactic biopsy systems



### Enabling Critical Testing and Training

The CIRS Stereotactic Needle Biopsy Phantom provides a leak-free, compressible test medium for performing the localization accuracy test in the American College of Radiology's stereotactic breast biopsy accreditation program<sup>1</sup>. The phantom should be used whenever a new system is installed or repaired, to ensure accurate needle placement. It may also be used as a practice medium for both stereotactic and standalone biopsies.

### Unique, Anthropomorphic Design

The phantom body is shaped to represent a partially compressed breast. This allows users to easily compress the breast to 4.5 cm thickness for optimum imaging. The shape also enables use in systems where the patient is prone or sitting.

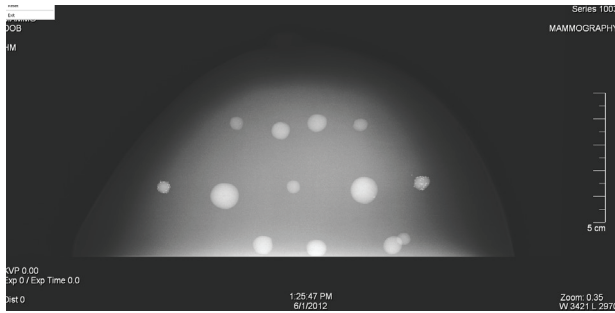
Made from a proprietary gel with a physical consistency similar to human tissue, the non-flowing material won't leak when punctured. The gel is surrounded by an elastic skin-like membrane to simulate realistic needle resistance.

The Model 013 can be reused multiple times with no special storage requirements. Please note, however, material extracted from the phantom may be difficult to remove from biopsy needles, preventing cleaning and re-use of the needle and other components. Thus, the phantom is not recommended for use with vacuum-assisted biopsy systems or any other system whose components are not disposable.

<sup>1</sup>American College of Radiology, Stereotactic Breast Biopsy Quality Control Manual. 1999.

## Phantom in Use

The CIRS Stereotactic Needle Biopsy Phantom (Model 013) is compatible standalone, add-on and digital stereotactic biopsy systems.



Mammography image of Model 013

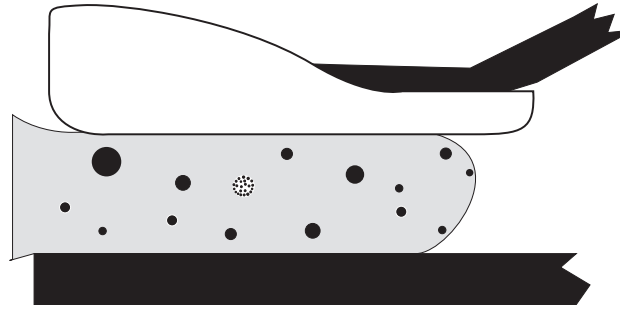


Illustration of Model 013 positioned on bucky

## Target Specifications

Targets	Shape	Color	Size Range	Quantity	Positioning
Dense Masses (small)	Round	Black	6 mm	3	Random
Dense Masses (medium)	Round	Black	9 mm	4	Random
Dense Masses (large)	Round	Black	11 mm	4	Random
Microcalcifications	Round	Orange	300-350 microns	2 clusters	Mid-Plane on right, left sides

*Note: Calcifications are grouped around radiographically transparent white mass*

## Phantom Specifications

<b>Dimensions:</b>	10 cm x 16.6 cm x 5 cm (6.5" x 2.5" x 4")
<b>Phantom Weight:</b>	1 lb. (0.4 kg)
<b>Phantom Volume:</b>	530 cc
<b>Material:</b>	Polyurethane

## Items included with Model 013

Quantity	Description
1	Stereotactic Needle Biopsy Phantom
1	User Guide
-	12-Month Warranty*

*\*Once any device has been inserted into the phantom (biopsy needles, localization wires, etc.), the 12-month warranty will not cover claims related to material desiccation or needle tracking.*