

TOR DEN Digital Dental Phantom

Leeds Test Objects' TOR DEN digital phantom is designed to be used to check the image quality performance of digital intra-oral dental x-ray systems. These tests should be carried out at acceptance to establish a baseline, and on a routine basis, keeping an on-going record of the test results, which will indicate any deterioration in performance.

TOR DEN digital is used for units with digital image acquisition, and has been designed in accordance with standards **IEC 61223-3-4** and **IEC 61223-2-7**.

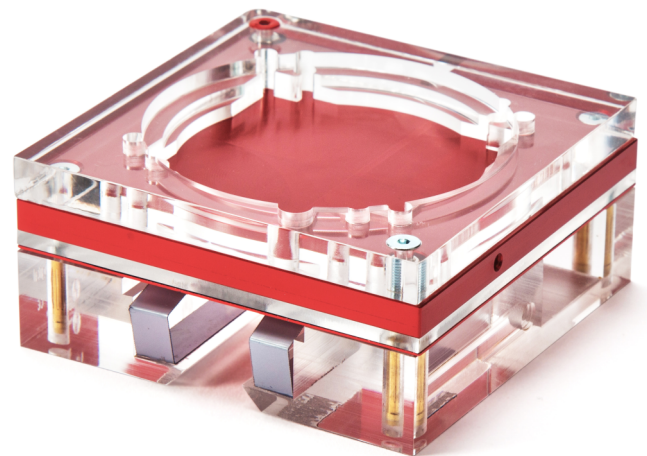
TOR DEN digital is supplied in a tough case with a bespoke foam insert.

TOR DEN Digital enables the following tests:

- Limiting Spatial Resolution
- Low Contrast Resolution
- Image Receptor Dose

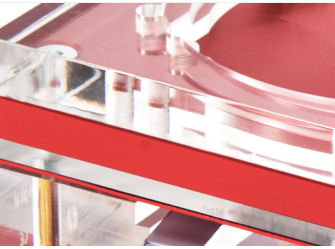
Upgrading to TOR DEN Digital OPG further enables:

- Radiation Field Alignment ~ for Panoramic and Cephalometric tests only
- Image Quality Homogeneity ~ for Panoramic and Cephalometric tests only



**Ask for
optional items:**

- OPG upgrade;
a tripod fitted with
an alignment jig, and
a 0.8mm Cu filter



TOR DEN Digital

Dental Phantom

Details

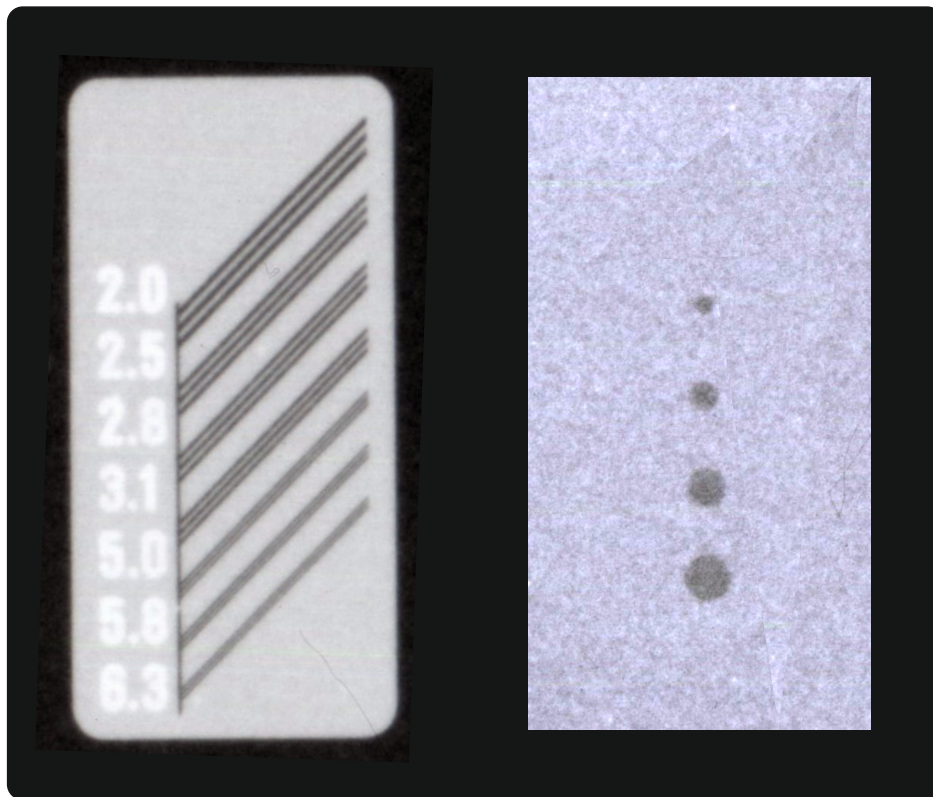
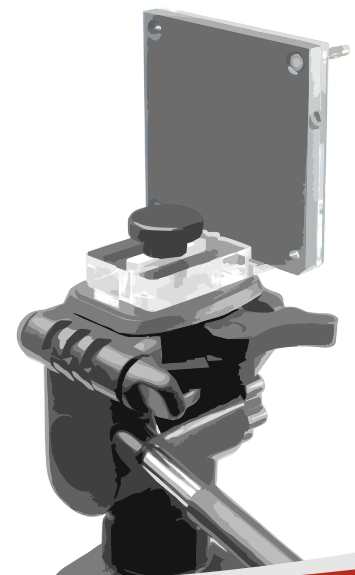
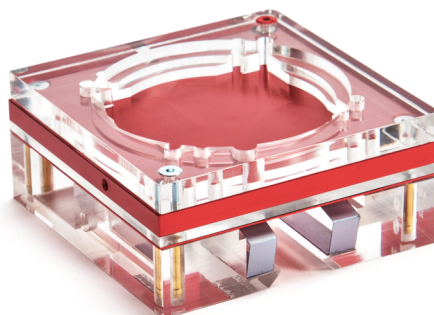


fig. 1 Radiograph of TOR DEN Digital



www.leadstestobjects.com